



## Pelger-Huet anomaly variants

**Authors:** John Lazarchick

**Category:** Bin > Miscellaneous

**Number of Units:** 3

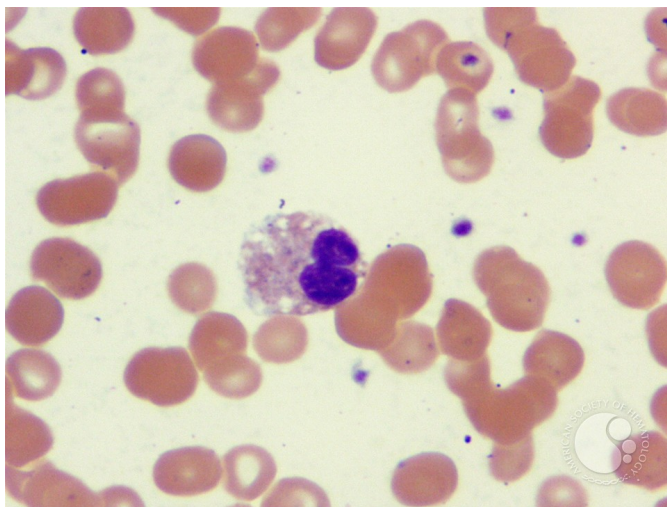
### Pelger-Huet anomaly variants - 1.

**Image ID:** 1261

**Authors:** John Lazarchick

**Category:** Myeloid Disorders > Neutrophil function disorders > Pelger-Huet Anomaly

**Description:** Routine peripheral smear performed on a 64-year-old female who was being evaluated for adult onset diabetes mellitus. Of note was the presence of hypolobated PMNs consistent with the Pelger-Huet anomaly. A classic pince-nez cell is shown.



Copyright © 2026 American Society of Hematology. Copyright restrictions may apply.



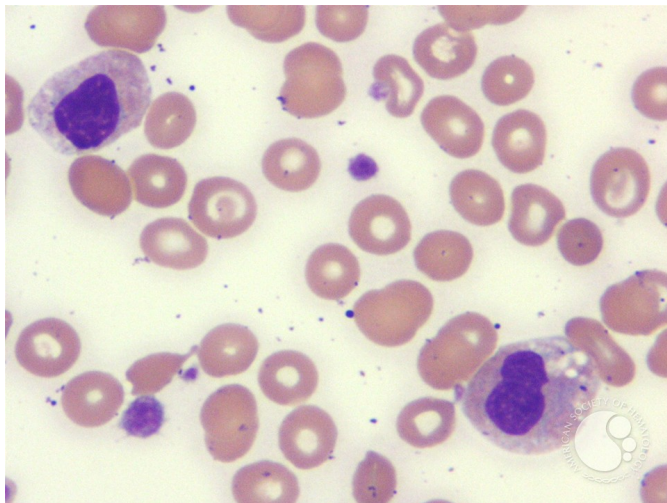
## Pelger-Huet anomaly variants - 2.

**Image ID:** 1262

**Authors:** John Lazarchick

**Category:** Laboratory Hematology > Basic cell morphology > Morphologic variants of white blood cells > Hyposegmented neutrophil &#160;> True Pelger Huet &#160;

**Description:** Two variant Pelger-Huet cells are shown which have no nuclear lobation.



Copyright © 2026 American Society of Hematology. Copyright restrictions may apply.

## Pelger-Huet anomaly variants - 3.

**Image ID:** 1263

**Authors:** John Lazarchick

**Category:** Laboratory Hematology > Basic cell morphology > Morphologic variants of white blood cells > Hyposegmented neutrophil &#160;> True Pelger Huet

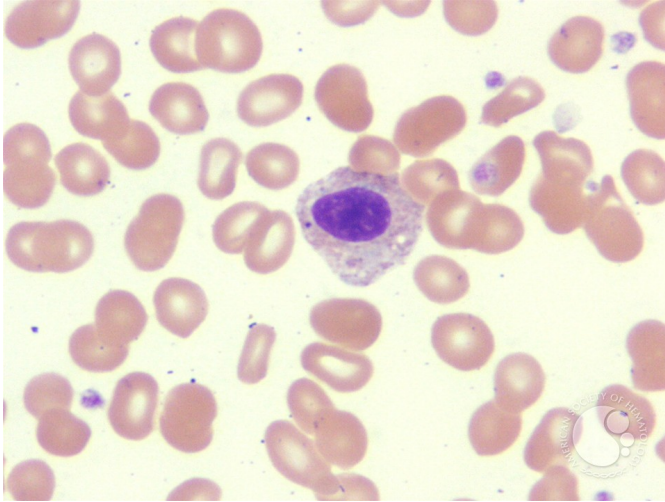




# ASH Image Bank™

&#160;

**Description:** The image illustrates another example of Pelger-Huet anomaly.



Copyright © 2026 American Society of Hematology. Copyright restrictions may apply.

