



# ASH Image Bank™

## Monocyte

**Authors:** Peter Maslak

**Category:** Laboratory Hematology > Basic cell morphology > Morphologic variants of white blood cells

**Number of Units:** 1

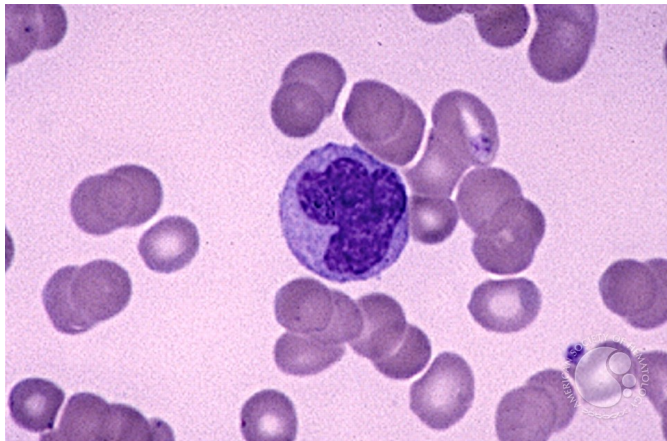
## Monocyte - 1.

**Image ID:** 1662

**Authors:** Peter Maslak

**Category:** Laboratory Hematology > Basic cell morphology > Morphologic variants of white blood cells

**Description:** Circulating monocyte is lightly basophilic with a lobulated nucleus (MacNeal Tetrachrome 1000x)



Copyright © 2026 American Society of Hematology. Copyright restrictions may apply.

