



## RBC agglutination

**Authors:** John Lazarchick; Ginell Post;

**Category:** <strong>Red Cell</strong>: Hemolytic Anemia (HA) > Autoimmune Hemolytic Anemias

**Number of Units:** 3

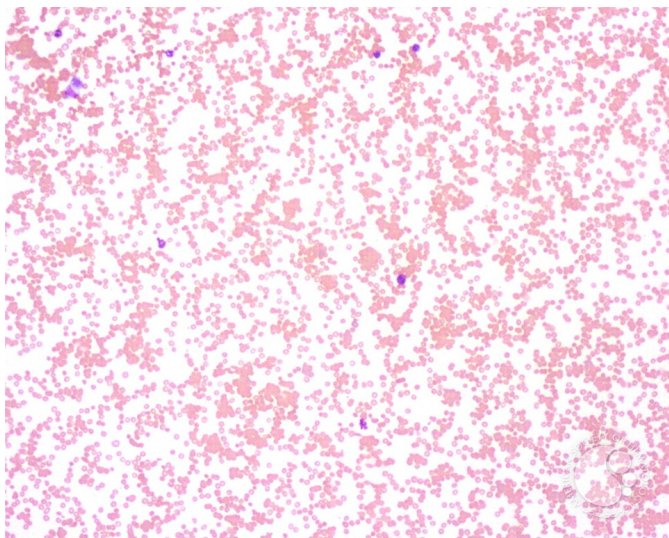
## RBC agglutination - 1.

**Image ID:** 3505

**Authors:** John Lazarchick; Ginell Post;

**Category:** <strong>Red Cell</strong>: Hemolytic Anemia (HA) > Autoimmune Hemolytic Anemias > Cold-active antibodies > Cold agglutinin disease (CAD) > Secondary CAD > Infectious > Mycoplasma

**Description:** Low-power view of a peripheral smear from a 21-year-old male diagnosed with Mycoplasma pneumonia. Note the marked RBC agglutination. The cold agglutinin was an IgM antibody with anti-I specificity.





# ASH Image Bank™

Copyright © 2026 American Society of Hematology. Copyright restrictions may apply.

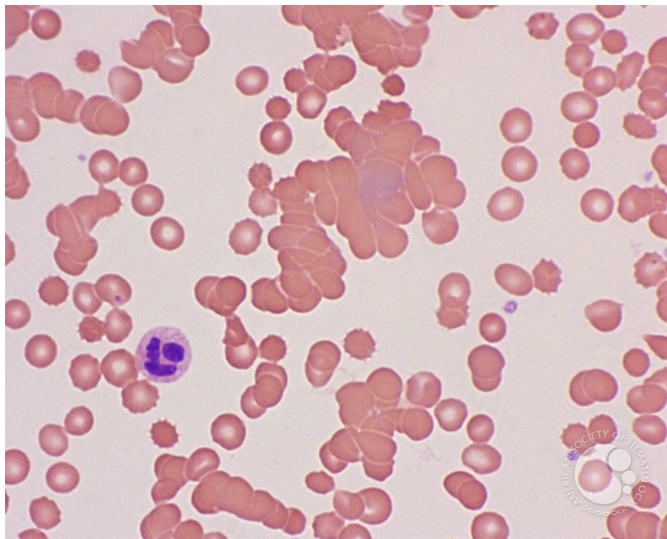
## RBC agglutination - 2.

**Image ID:** 3506

**Authors:** John Lazarchick; Ginell Post;

**Category:** <strong>Red Cell</strong>: Hemolytic Anemia (HA) > Autoimmune Hemolytic Anemias

**Description:** At higher magnification, variable-sized clumps of RBCs are noted with occasional spherocytes also evident.



Copyright © 2026 American Society of Hematology. Copyright restrictions may apply.

## RBC agglutination - 3.

**Image ID:** 3507

**Authors:** John Lazarchick; Ginell Post;

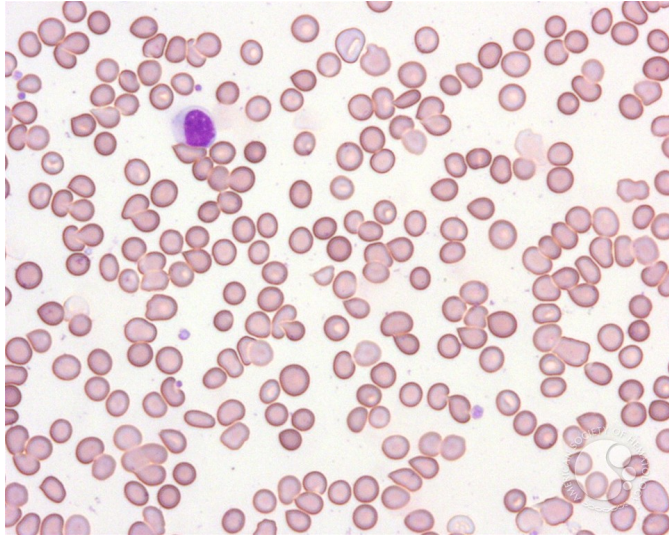




# ASH Image Bank™

**Category:** <strong>Red Cell</strong>: Hemolytic Anemia (HA) > Autoimmune Hemolytic Anemias

**Description:** When the blood sample is warmed to 37°C for several minutes and a peripheral smear prepared on a pre-warmed slide, the agglutination is markedly decreased with single RBCs now predominant.



Copyright © 2026 American Society of Hematology. Copyright restrictions may apply.

