



## Debris-laden macrophage

**Authors:** Peter Maslak

**Category:** Laboratory Hematology > Basic cell morphology > Morphologic variants of white blood cells

**Number of Units:** 1

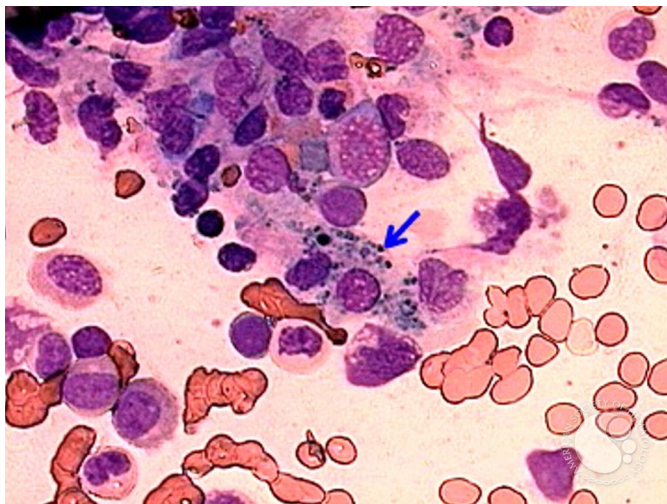
## Debris-laden macrophage - 1.

**Image ID:** 1651

**Authors:** Peter Maslak

**Category:** Laboratory Hematology > Basic cell morphology > Morphologic variants of white blood cells

**Description:** Macrophage laden with cytoplasmic debris (arrow) has a rather amorphous structure (MacNeal Tetrachrome 400x)



Copyright © 2026 American Society of Hematology. Copyright restrictions may apply.