



ASH Image Bank™

Cold agglutinin disease

Authors: John Lazarchick

Category: Red Cell: Hemolytic Anemia (HA) > Autoimmune Hemolytic Anemias

Number of Units: 2

Cold agglutinin disease - 1.

Image ID: 1052

Authors: John Lazarchick

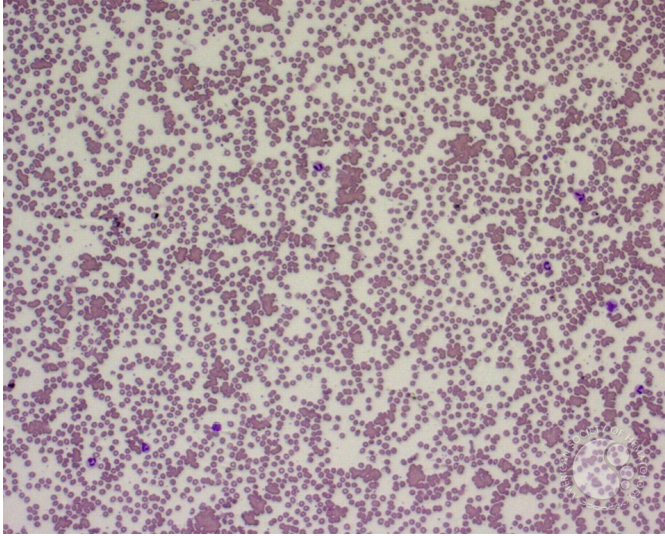
Category: Red Cell: Hemolytic Anemia (HA) > Autoimmune Hemolytic Anemias > Cold-active antibodies > Cold agglutinin disease (CAD) > Secondary CAD > Lymphoproliferative diseases

Description: Peripheral smear from a patient with a diagnosis of Cold Agglutinin Disease is shown. Laboratory data included a cold agglutinin titer of 1:256 and the presence of an IgM kappa restricted monoclonal protein in his serum. The patient was subsequently diagnoses with a small lymphocytic lymphoma.





ASH Image Bank™



Copyright © 2026 American Society of Hematology. Copyright restrictions may apply.

Cold agglutinin disease - 2.

Image ID: 1053

Authors: John Lazarchick

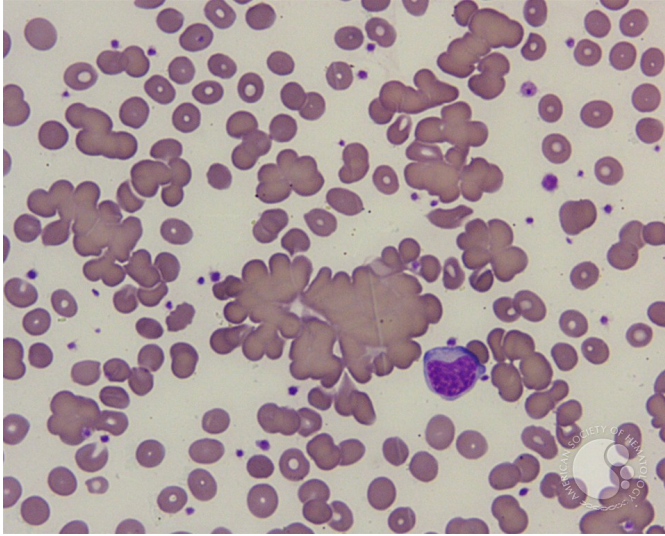
Category: Red Cell: Hemolytic Anemia (HA) > Autoimmune Hemolytic Anemias > Cold-active antibodies > Cold agglutinin disease (CAD) > Secondary CAD > Lymphoproliferative diseases

Description: Agglutinated masses of RBCs of variable size are noted in this view. Both the WBC and platelet count were normal.





ASH Image Bank™



Copyright © 2026 American Society of Hematology. Copyright restrictions may apply.

