



Plasmacytoid lymphocyte

Authors: Peter Maslak

Category: Laboratory Hematology > Basic cell morphology > Morphologic variants of white blood cells

Number of Units: 1

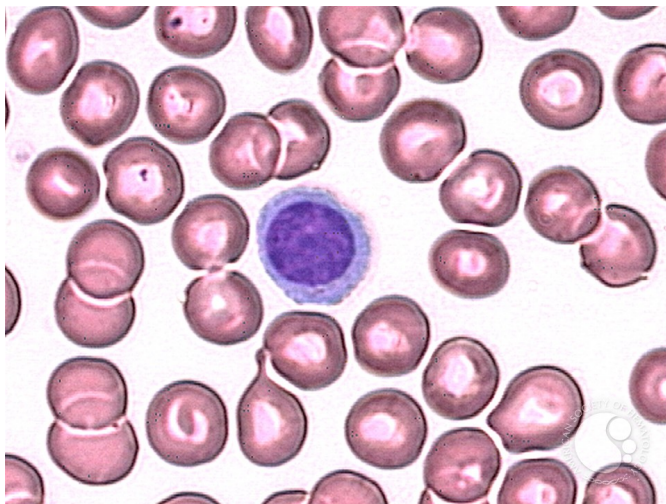
Plasmacytoid lymphocyte - 1.

Image ID: 1708

Authors: Peter Maslak

Category: Laboratory Hematology > Basic cell morphology > Morphologic variants of white blood cells

Description: This plasmacytoid lymphocyte has a round regular nucleus with basophilic cytoplasm. These cells may be found in reactive conditions.



Copyright © 2026 American Society of Hematology. Copyright restrictions may apply.