



ASH Image Bank™

Monocyte

Authors: Peter Maslak

Category: Laboratory Hematology > Basic cell morphology > Morphologic variants of white blood cells

Number of Units: 1

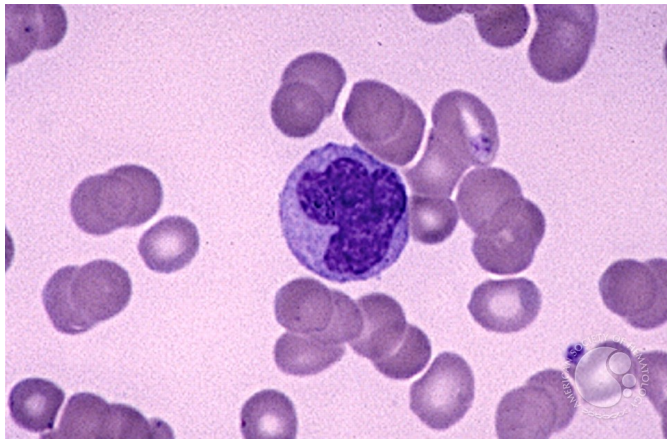
Monocyte - 1.

Image ID: 1662

Authors: Peter Maslak

Category: Laboratory Hematology > Basic cell morphology > Morphologic variants of white blood cells

Description: Circulating monocyte is lightly basophilic with a lobulated nucleus (MacNeal Tetrachrome 1000x)



Copyright © 2026 American Society of Hematology. Copyright restrictions may apply.

