



## Plasmodium falciparum gametocytes

**Authors:** SOMIYA LAMRABAT, MD

**Category:** Infectious Disease > Parasites > Malaria > P. falciparum

### Description:

A military veteran returning from Cameron after 11 months presented with a picture of an influenza-like illness following infection with Coronavirus (Covid-19).

A thick drop and a peripheral blood smear were performed and demonstrated the presence of numerous *Plasmodium falciparum* gametocytes.

**Image 1:** Reactional morphological abnormality of neutrophil granulocyte in malaria: hyposegmentation of the nucleus, and presence of malarial pigment in the cytoplasm.

**Image 2:** Gametocytes of *P. falciparum* in a thick blood smear.

**Image 3:** Gametocytes of *P. falciparum* in a thin blood smear showing:

• An early stage gametocyte.

• Female gametocyte: Crescent/banana-like shape with blue cytoplasm and a central mass of chromatin that consists of black rod-like granules.

• Male gametocytes: Almost morphologically identical to the female gametocyte but thicker and less crescentic.

**Number of Units:** 3

## Granulocyte with malarial pigment

**Image ID:** 63448

**Authors:** Somiya LAMRABAT

**Category:** Infectious Disease > Parasites > Malaria > P. falciparum

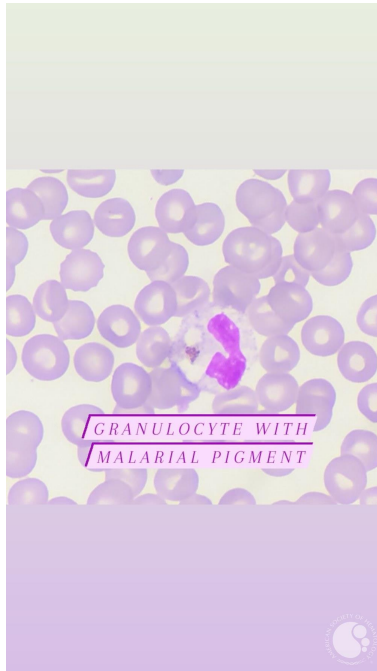
### Description:





# ASH Image Bank™

Thin blood smear : Reactional morphological abnormality of neutrophil granulocyte in malaria (hyposegmentation of the nucleus, and presence of malarial pigment in the cytoplasm).



Copyright © 2026 American Society of Hematology. Copyright restrictions may apply.

## Plasmodium falciparum gametocytes 1

**Image ID:** 63449

**Authors:** SOMIYA LAMRABAT, MD

**Category:** Infectious Disease > Parasites > Malaria > *P. falciparum*

### **Description:**

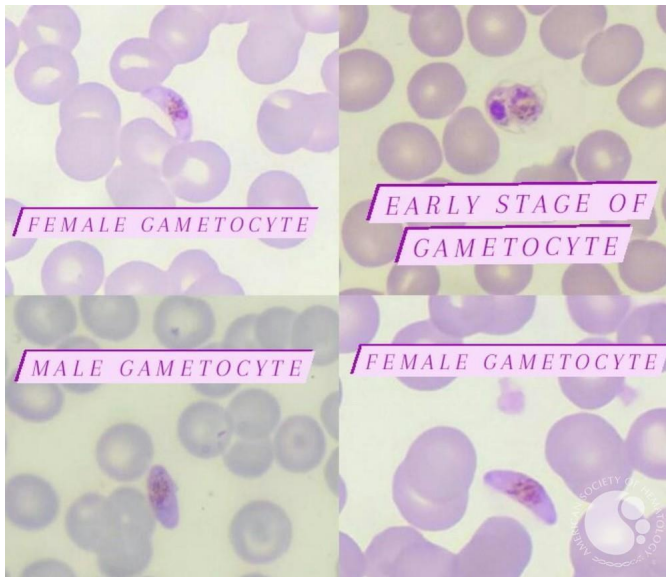
Gametocytes of *P. falciparum* in a thick blood smear.







# ASH Image Bank™



Copyright © 2026 American Society of Hematology. Copyright restrictions may apply.

