



RBC agglutination

Authors: John Lazarchick; Ginell Post;

Category: Red Cell: Hemolytic Anemia (HA) > Autoimmune Hemolytic Anemias

Number of Units: 3

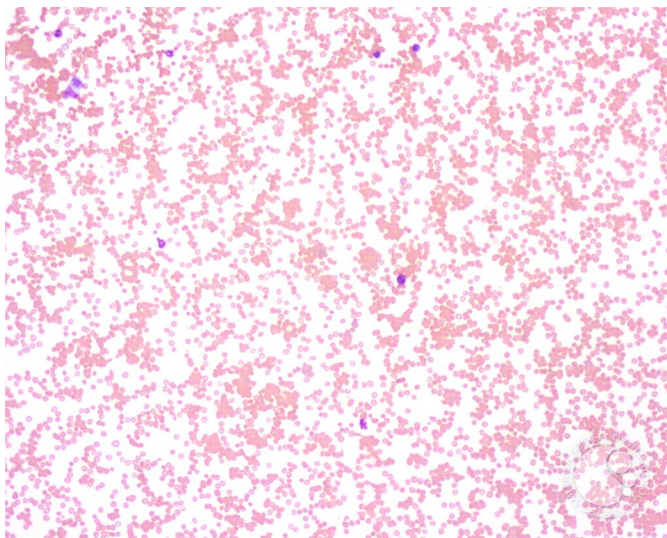
RBC agglutination - 1.

Image ID: 3505

Authors: John Lazarchick; Ginell Post;

Category: Red Cell: Hemolytic Anemia (HA) > Autoimmune Hemolytic Anemias > Cold-active antibodies > Cold agglutinin disease (CAD) > Secondary CAD > Infectious > Mycoplasma

Description: Low-power view of a peripheral smear from a 21-year-old male diagnosed with Mycoplasma pneumonia. Note the marked RBC agglutination. The cold agglutinin was an IgM antibody with anti-I specificity.





ASH Image Bank™

Copyright © 2026 American Society of Hematology. Copyright restrictions may apply.

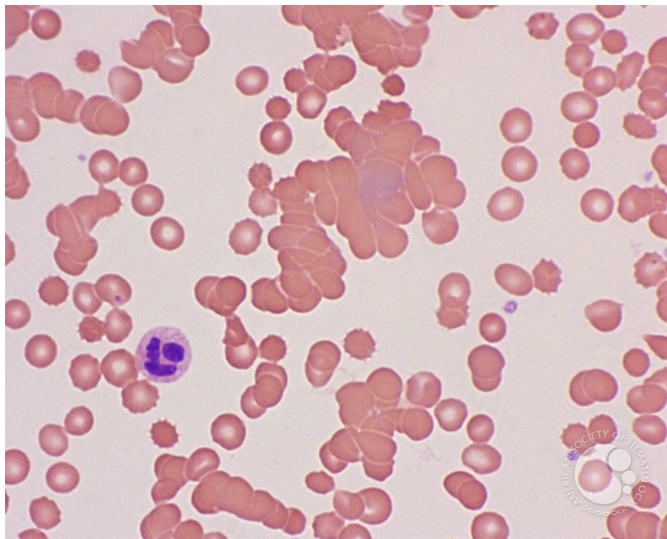
RBC agglutination - 2.

Image ID: 3506

Authors: John Lazarchick; Ginell Post;

Category: Red Cell: Hemolytic Anemia (HA) > Autoimmune Hemolytic Anemias

Description: At higher magnification, variable-sized clumps of RBCs are noted with occasional spherocytes also evident.



Copyright © 2026 American Society of Hematology. Copyright restrictions may apply.

RBC agglutination - 3.

Image ID: 3507

Authors: John Lazarchick; Ginell Post;

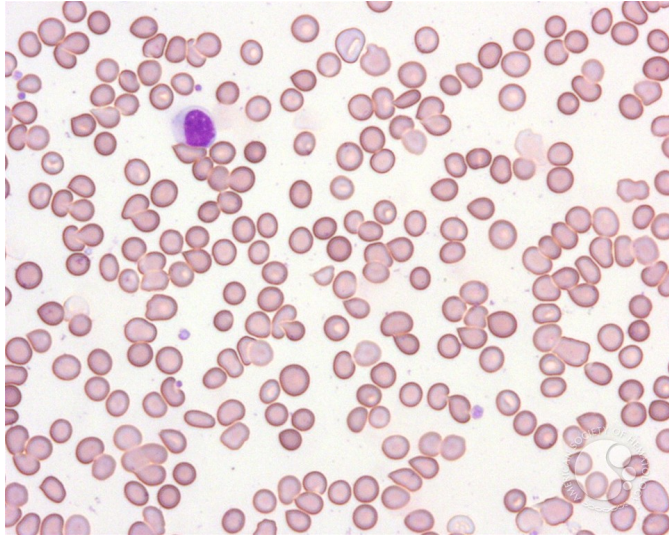




ASH Image Bank™

Category: Red Cell: Hemolytic Anemia (HA) > Autoimmune Hemolytic Anemias

Description: When the blood sample is warmed to 37°C for several minutes and a peripheral smear prepared on a pre-warmed slide, the agglutination is markedly decreased with single RBCs now predominant.



Copyright © 2026 American Society of Hematology. Copyright restrictions may apply.

