



## Pelger-Huet Anomaly

**Authors:** John Lazarchick

**Category:** Macrophage/Histiocytic and dendritic cell Neoplasms and disorders (2015) > Other reactive and neoplastic Macrophage/dendritic lesions

**Number of Units:** 6

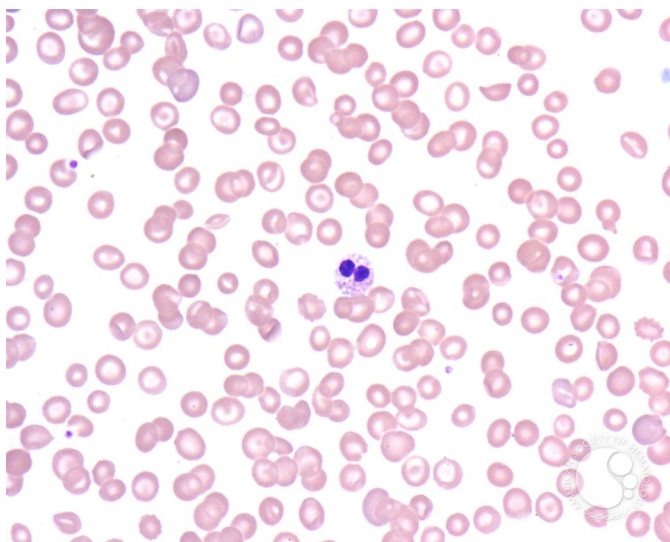
## Pelger-Huet Anomaly - 1.

**Image ID:** 2694

**Authors:** John Lazarchick

**Category:** Myeloid Disorders > Neutrophil function disorders > Pelger-Huet Anomaly

**Description:** Peripheral smear from a 45 year old male with alcoholic cirrhosis. His WBC was 3110 with 80% of his neutrophils showing hyposegmentation. A bi-lobed (pince-nez) form is shown in this view.



Copyright © 2026 American Society of Hematology. Copyright restrictions may apply.



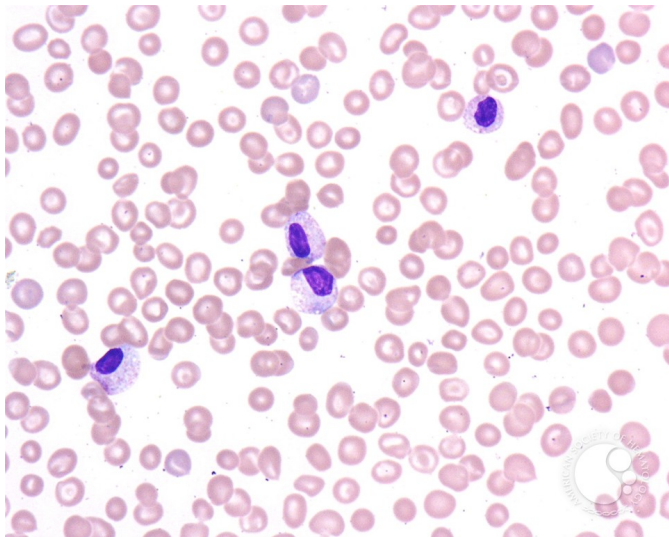
## Pelger-Huet Anomoly - 2.

**Image ID:** 2695

**Authors:** John Lazarchick

**Category:** Laboratory Hematology > Basic cell morphology > Morphologic variants of white blood cells > Hyposegmented neutrophil &#160; > True Pelger Huet &#160;

**Description:** The neutrophils in this view show mature nuclei with coarse clumped chromatin but no segmentation or are only minimally indented.



Copyright © 2026 American Society of Hematology. Copyright restrictions may apply.

## Pelger-Huet Anomoly - 3.

**Image ID:** 2696

**Authors:** John Lazarchick

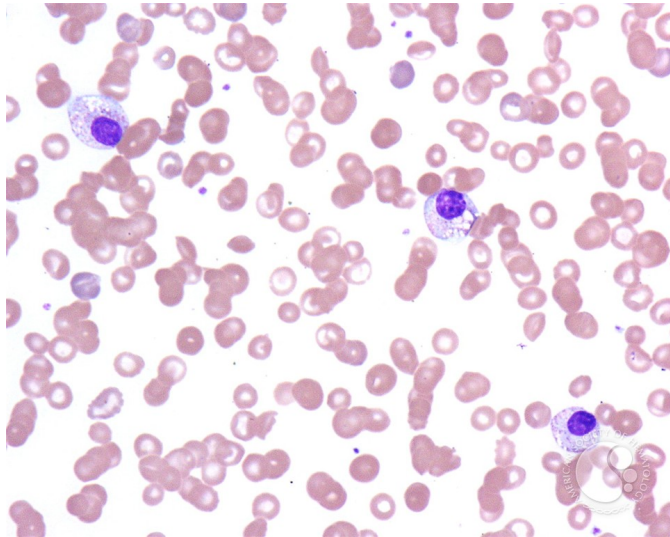
**Category:** Laboratory Hematology > Basic cell morphology > Morphologic variants



# ASH Image Bank™

of white blood cells > Hyposegmented neutrophil &#160;

**Description:** The Pelger-Huet forms in this view show toxic granulation and cytoplasmic vacuolization. In addition, numerous target cells are present as well as polychromatophilic RBCs. The patient had been seen because of GI bleeding.



Copyright © 2026 American Society of Hematology. Copyright restrictions may apply.

## Pelger-Huet Anomaly - 4.

**Image ID:** 2697

**Authors:** John Lazarchick

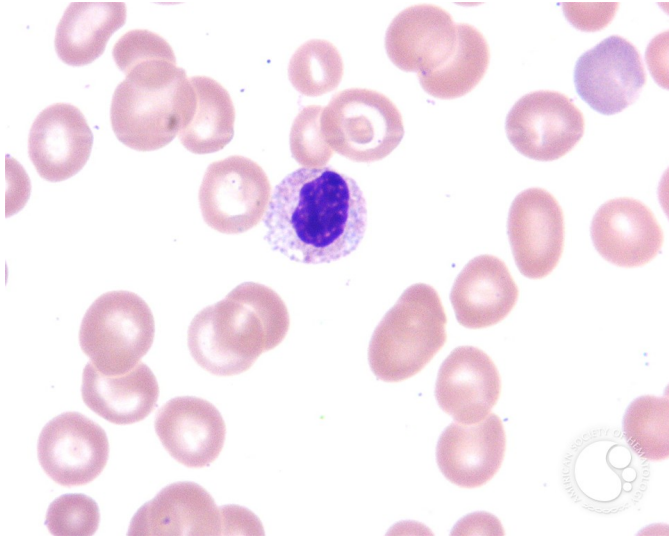
**Category:** Laboratory Hematology > Basic cell morphology > Morphologic variants of white blood cells > Hyposegmented neutrophil &#160; > True Pelger Huet &#160;

**Description:** A higher power view of the previous image better illustrates the mature nucleus of the Pelger-Huet cell. The chromatin is clumped and the nucleus slightly indented. There is a suggestion of a Dohle body abutting the cytoplasmic membrane.





# ASH Image Bank™



Copyright © 2026 American Society of Hematology. Copyright restrictions may apply.

## Pelger-Huet Anomaly - 5.

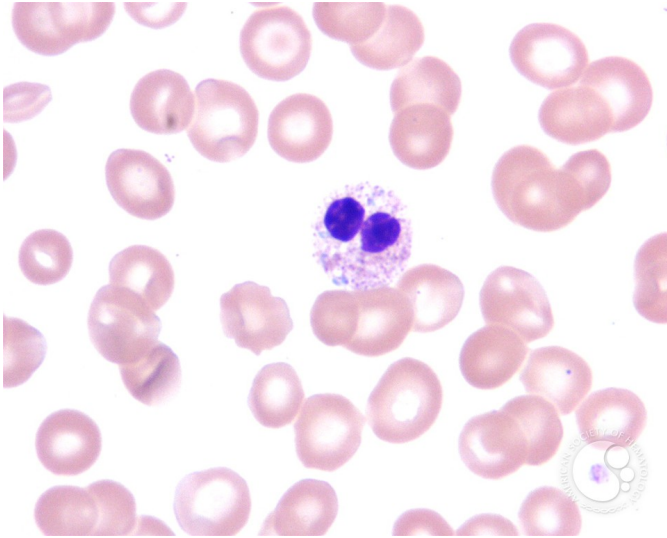
**Image ID:** 2698

**Authors:** John Lazarchick

**Category:** Laboratory Hematology > Basic cell morphology > Morphologic variants of white blood cells > Hyposegmented neutrophil &#160;

**Description:** The bi-lobed neutrophil in this image shows more clearly the toxic granulation, cytoplasmic vacuolization and bluish Dohle body.





Copyright © 2026 American Society of Hematology. Copyright restrictions may apply.

## Pelger-Huet Anomaly - 6.

**Image ID:** 2699

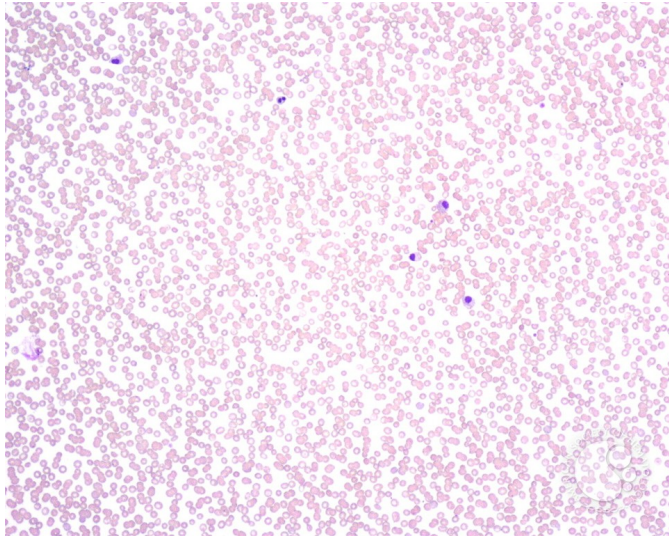
**Authors:** John Lazarchick

**Category:** Myeloid Disorders > Neutrophil function disorders > Pelger-Huet Anomaly

**Description:** A low power view of the peripheral smear illustrates the variant Pelger-Huet forms present, from the classical pince-nez shape to that of round or slightly indented nuclear forms. Similar findings were documented on this patient's peripheral smear 10 years previously.



# ASH Image Bank™



Copyright © 2026 American Society of Hematology. Copyright restrictions may apply.

