



# ASH Image Bank™

## Parvovirus Inclusions

**Authors:** John Lazarchick

**Category:** Underproduction Anemias > Pure Red Cell Aplasia

**Number of Units:** 4

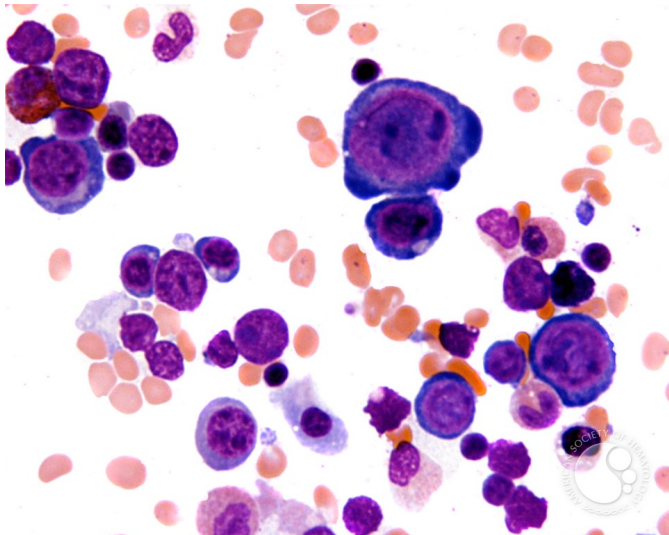
## Parvovirus Inclusions - 1.

**Image ID:** 2607

**Authors:** John Lazarchick

**Category:** Underproduction Anemias > Pure Red Cell Aplasia

**Description:** Bone marrow aspirate in a patient with AIDS who had severe anemia. Marked erythroid hyperplasia is evident with multiple erythroblasts present. Nuclear inclusions are readily evident in the erythroblast in the upper right corner.



Copyright © 2026 American Society of Hematology. Copyright restrictions may apply.





# ASH Image Bank™

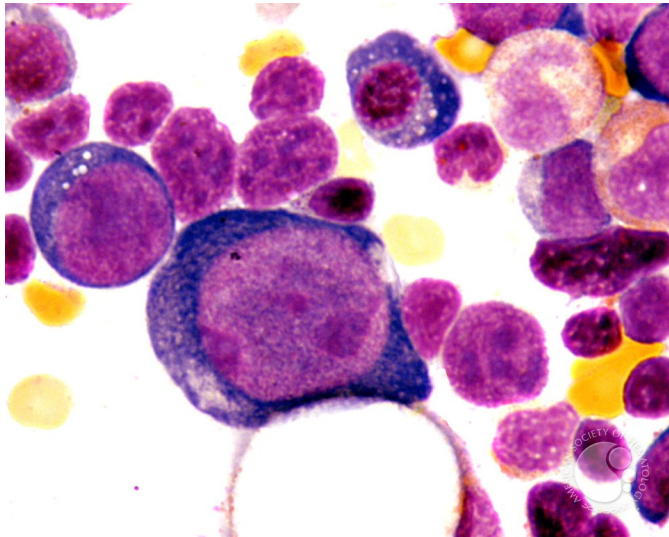
## Parvovirus Inclusions - 2.

**Image ID:** 2608

**Authors:** John Lazarchick

**Category:** Underproduction Anemias > Pure Red Cell Aplasia

**Description:** The viral inclusions are more readily apparent on this higher-power view of an erythroblast and more mature erythroid precursor.



Copyright © 2026 American Society of Hematology. Copyright restrictions may apply.

## Parvovirus Inclusions - 3.

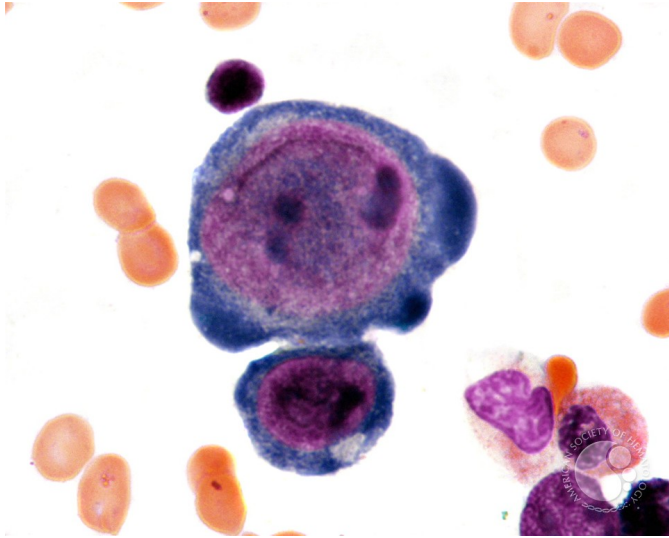
**Image ID:** 2609

**Authors:** John Lazarchick

**Category:** Underproduction Anemias > Pure Red Cell Aplasia

**Description:** The erythroblast shows a circumscribed nuclear inclusion consistent with parvovirus infection.





Copyright © 2026 American Society of Hematology. Copyright restrictions may apply.

## Parvovirus Inclusions - 4.

**Image ID:** 2610

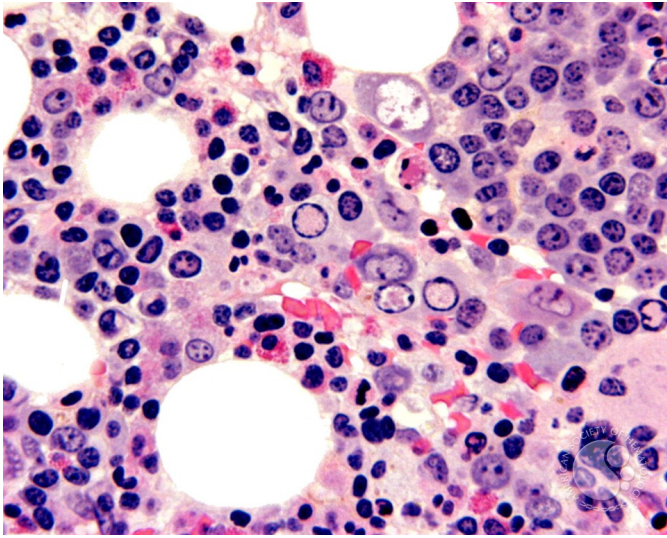
**Authors:** John Lazarchick

**Category:** Underproduction Anemias > Pure Red Cell Aplasia

**Description:** The parvovirus nuclear inclusions (clear areas) in the erythroblasts are more evident on the biopsy of the marrow.



# ASH Image Bank™



Copyright © 2026 American Society of Hematology. Copyright restrictions may apply.

