



## Macrophages containing blue- gray hemosiderin pigment

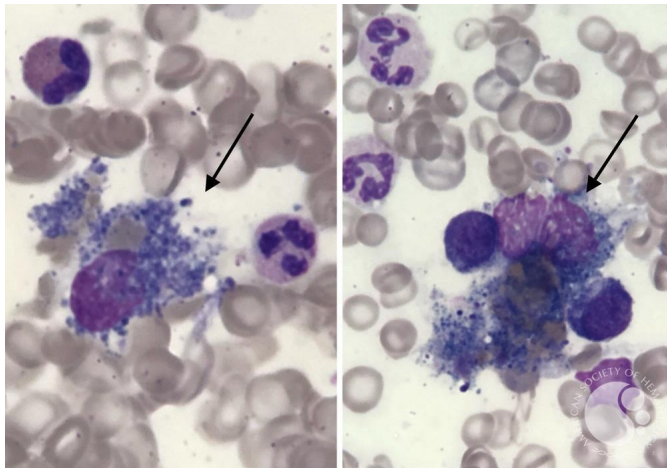
**Image ID:** 63653

**Authors:** Perla Vicari, MD, PhD

**Category:** Laboratory Hematology > Basic cell morphology > Morphologic variants of white blood cells > Phagocytosed material

### **Description:**

Bone marrow smear (May–Grunwald–Giemsa stain) showing macrophages containing blue- gray hemosiderin pigment (arrows).



Copyright © 2026 American Society of Hematology. Copyright restrictions may apply.