



# ASH Image Bank™

## Beta-thalassemia intermedia

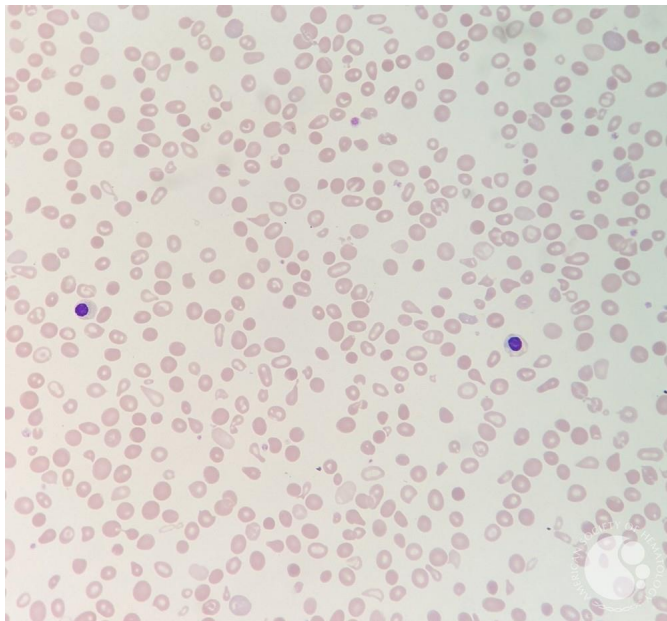
**Image ID:** 63576

**Authors:** Jacob Kjelland, MD

**Category: Red Cell:** Hemoglobin disorder > Quantitative disorders (thalassemias)  
> Beta-thalassemia

### Description:

Peripheral smear from a patient with hemoglobin of 8.5 g/dL, Hb electrophoresis with HbA 41%, HbA2 5% and HbF 54%. Smear shows schistocytes, microspherocytes, marked anisocytosis, dacrocytes, polychromasia, nucleated RBCs along with target cells. The patient was diagnosed with B-thalassemia intermedia.



Copyright © 2026 American Society of Hematology. Copyright restrictions may apply.

