



ASH Image Bank™

Nurse cell: feeder of RBCs

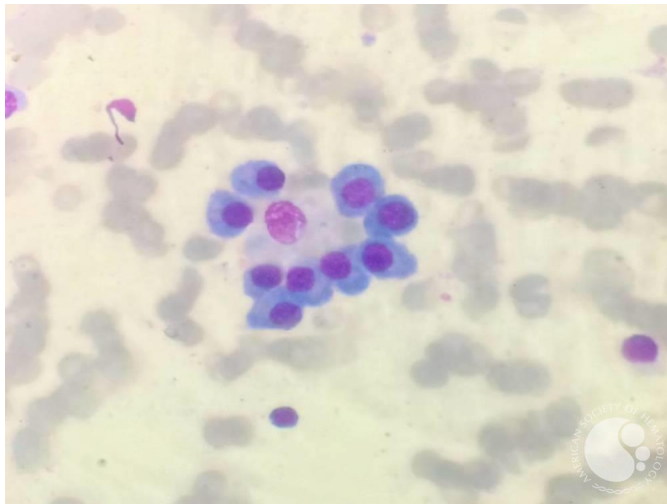
Image ID: 63309

Authors: Kanwaljeet Singh; Venkat Somasundaram; Ankur Ahuja; Manisha Singh; Tathagat Chatterjee

Category: Red Cell: Disorders of Iron Metabolism and Heme Synthesis

Description:

MGG stained bone marrow aspirate showing a macrophage surrounded by erythroblasts. This macrophage with surrounding erythroblasts is known as "Nurse cell" which supply iron & nutrition to these cells for formation of RBCs.



Copyright © 2026 American Society of Hematology. Copyright restrictions may apply.

