



ASH Image Bank™

Different phases of hemophagocytosis in bone marrow (100x).

Image ID: 63303

Authors: David Israel Garrido, MD; Matilde Boada, MD

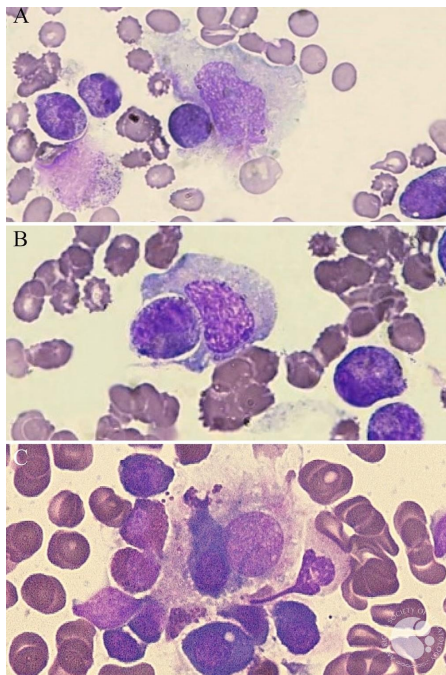
Category: Macrophage/Histiocytic and dendritic cell Neoplasms and disorders (2015)

Description:

Image A shows a hematopoietic cell attached to a macrophage membrane evagination called pseudopodia.

Image B presents how pseudopodia surround a hematopoietic cell.

Image C presents an ingested plasma cell forming a phagosome.



Copyright © 2026 American Society of Hematology. Copyright restrictions may apply.

