



# ASH Image Bank™

## Promonocytes

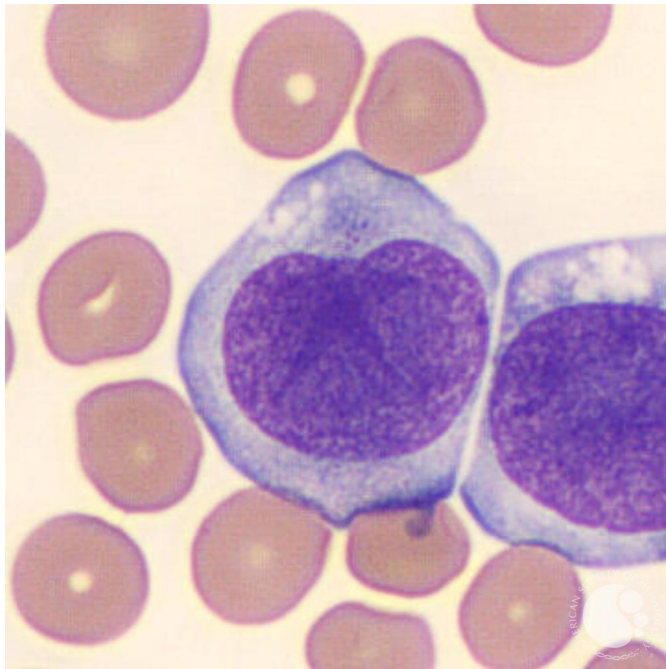
**Image ID:** 60928

**Authors:** Teresa Scordino

**Category:** Morphologic variants of normal cells > Morphologic variants of white blood cells

### Description:

Promonocytes are immature monocytic cells that have moderate amounts of blue-gray cytoplasm and fine cytoplasmic granules. Cytoplasmic vacuoles may be present. The nucleus is lobulated or delicately folded. The chromatin is less condensed than that of a mature monocyte, and nucleoli may be present. Promonocytes are considered to be blast equivalents, and are counted as blasts in peripheral blood and bone marrow differential counts.



Copyright © 2026 American Society of Hematology. Copyright restrictions may apply.

