



ASH Image Bank™

Target and Spur cell in liver disease

Image ID: 60811

Authors: Girish Venkataraman, MD, MBBS

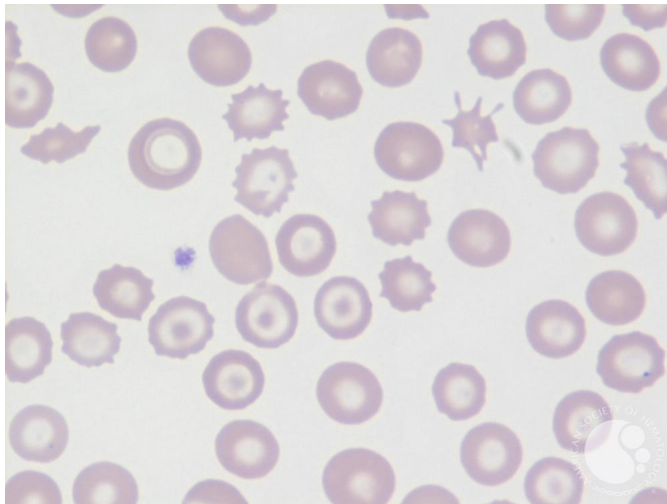
Category: **Morphologic variants of normal cells** > Morphologic variants of Red Blood Cells/precursors > Normal Red blood cell morphology with resting lymphocyte for comparison > Poikilocytosis > Target cells

Description:

Peripheral blood smear of a 38-year-old female with long-standing Crohn's disease (CD) and development of microcytic anemia.

The smear shows numerous target cells and a spur cell (top right). All liver function tests were abnormal indicating that the target cells are due to liver disease secondary to CD. This patient originally had concomitant iron deficiency.

Spur red cells have elongated projections while Burr cells are red cells with circumferential blunted borders. The former is typically seen in liver disease while the latter is seen in uremia. The "Burr" morphology in this case is artifactual related to slide preparation and not related to uremia.



Copyright © 2026 American Society of Hematology. Copyright restrictions may apply.

