



ASH Image Bank™

Metamyelocyte

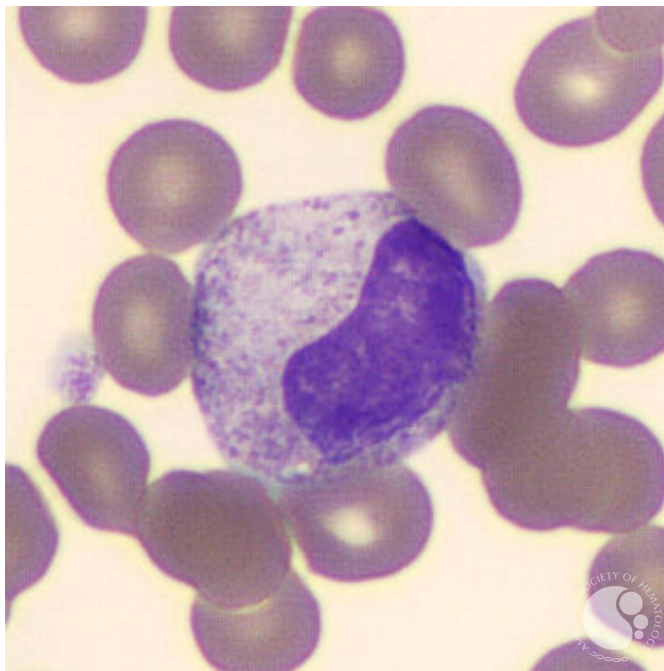
Image ID: 60398

Authors: Teresa Scordino MD

Category: Morphologic variants of normal cells > Morphologic variants of white blood cells

Description:

Neutrophilic metamyelocytes have condensed chromatin and a slightly indented nucleus (the indentation is less than half the diameter of the nucleus). The cytoplasm contains abundant specific granules and rare primary (azurophilic) granules. Metamyelocytes are not normally present in the peripheral blood, but can be seen in infectious or inflammatory states, and in other reactive and neoplastic conditions.



Copyright © 2026 American Society of Hematology. Copyright restrictions may apply.

