



Teardrop cells or Dacrocytes

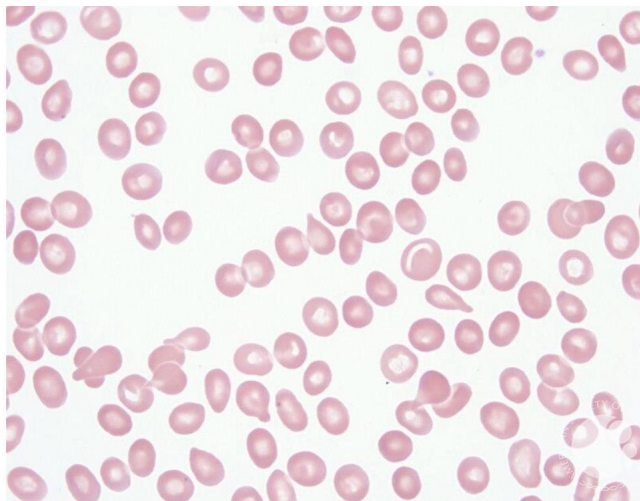
Image ID: 60311

Authors: Teresa Scordino

Category: **Morphologic variants of normal cells** > Morphologic variants of Red Blood Cells/precursors > Normal Red blood cell morphology with resting lymphocyte for comparison > Poikilocytosis > Teardrop (dacrocyte) cells

Description:

•Teardrop cells (dacrocytes) are frequently associated with infiltration of the bone marrow by fibrosis, granulomatous inflammation, or hematopoietic or metastatic neoplasms. They can also be seen in patients with splenic abnormalities, vitamin B12 deficiency, and some other forms of anemia. True teardrop cells have blunted tips and point in different directions. Teardrop cells that occur as an artifact of blood smear preparation have sharply pointed ends that point in the same direction.



Copyright © 2026 American Society of Hematology. Copyright restrictions may apply.