



Target Cells

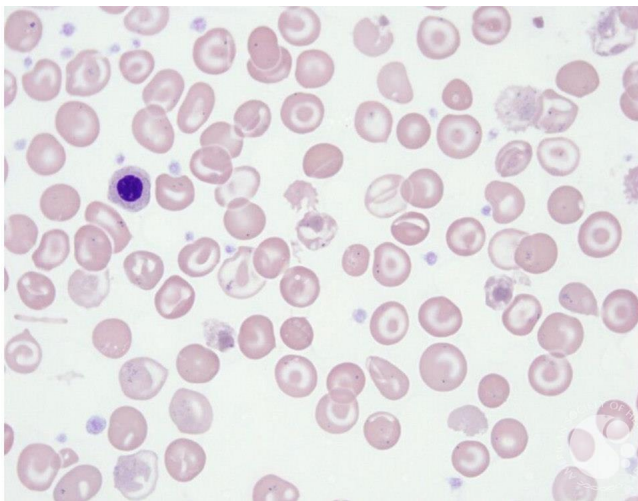
Image ID: 60310

Authors: Teresa Scordino

Category: **Morphologic variants of normal cells** > Morphologic variants of Red Blood Cells/precursors > Normal Red blood cell morphology with resting lymphocyte for comparison > Poikilocytosis > Target cells

Description:

•Numerous target cells are present in this patient with hemoglobin E and beta thalassemia trait. Target cells, or codocytes, have an excess of cell membrane relative to cell volume. Macrocytic target cells can be seen in liver disease, and microcytic target cells may be seen in thalassemia. Target cells may also be seen in hemoglobin C and E disease, and following splenectomy; they can also occur as an artifact of slide preparation. Artifactual target cells are generally irregularly distributed on the slide.



Copyright © 2026 American Society of Hematology. Copyright restrictions may apply.