



ASH Image Bank™

Sickle cells

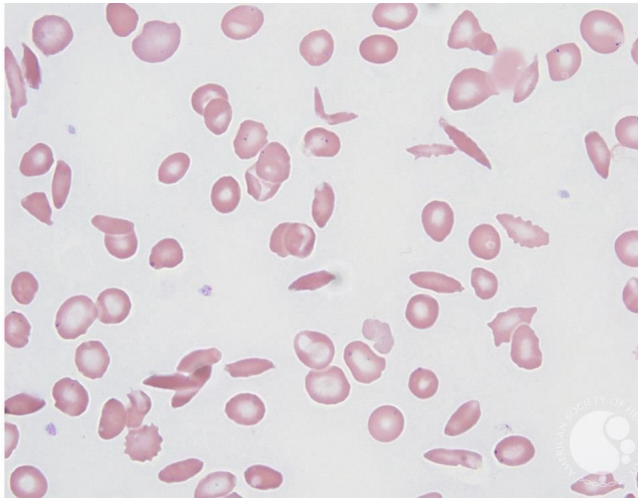
Image ID: 60297

Authors: Teresa Scordino

Category: **Morphologic variants of normal cells** > Morphologic variants of Red Blood Cells/precursors > Normal Red blood cell morphology with resting lymphocyte for comparison > Poikilocytosis

Description:

Sickle cells (drepanocytes) are elongated red blood cells with pointed ends. They are seen in sickling hemoglobinopathies such as sickle cell anemia (homozygous hemoglobin SS), hemoglobin SD disease, and hemoglobin S/beta-thalassemia.



Copyright © 2026 American Society of Hematology. Copyright restrictions may apply.

