



Polychromasia neonate

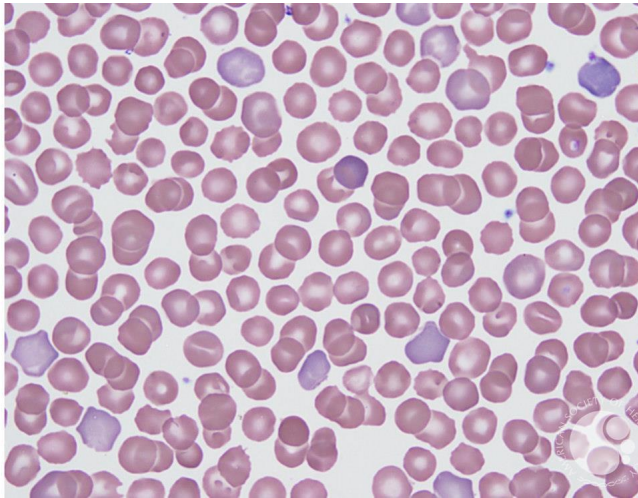
Image ID: 60295

Authors: Teresa Scordino

Category: **Morphologic variants of normal cells** > Morphologic variants of Red Blood Cells/precursors > Normal Red blood cell morphology with resting lymphocyte for comparison > Color > Polychromasia

Description:

•Polychromasia (polychromatophilic cells) in a neonate. Polychromatophilic cells are young red blood cells that have been recently released from the bone marrow. They are larger than mature red cells, and are bluish in color. Polychromasia is increased in hemolysis, blood loss, and marrow infiltration. Normal neonates have a higher number of polychromatophilic cells than older children and adults.



Copyright © 2026 American Society of Hematology. Copyright restrictions may apply.