



## Teardrop cells (dacrocytes)

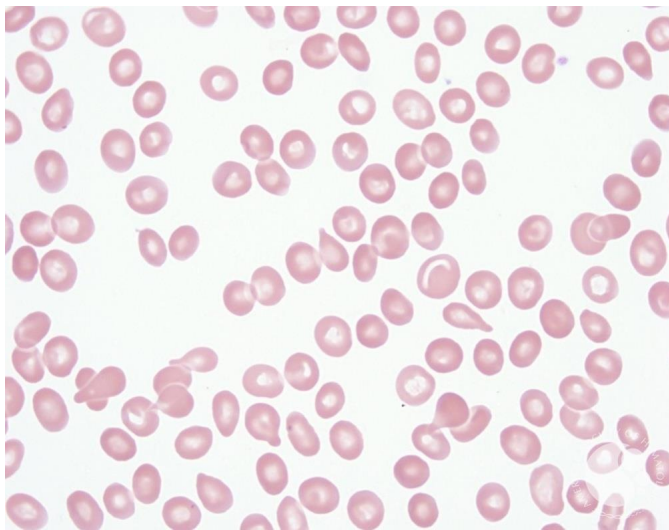
**Image ID:** 60280

**Authors:** Teresa Scordino MD

**Category:** Morphologic variants of normal cells > Morphologic variants of Red Blood Cells/precursors > Normal Red blood cell morphology with resting lymphocyte for comparison > Poikilocytosis > Teardrop (dacrocyte) cells

### Description:

Teardrop cells in a peripheral blood smear from a patient whose bone marrow was extensively replaced by B lymphoblastic leukemia.&nbsp; Teardrop cells may be seen in the setting of marrow infiltration (by fibrosis, granulomatous inflammation, hematologic or metastatic malignancy), splenic abnormalities, megaloblastic anemia, and thalassemia.&nbsp; True teardrop cells have slightly rounded or blunted ends.&nbsp; In contrast, teardrop cells that are formed as an artifact of smear preparation have very sharp points, all facing in the same direction.



Copyright © 2026 American Society of Hematology. Copyright restrictions may apply.