



ASH Image Bank™

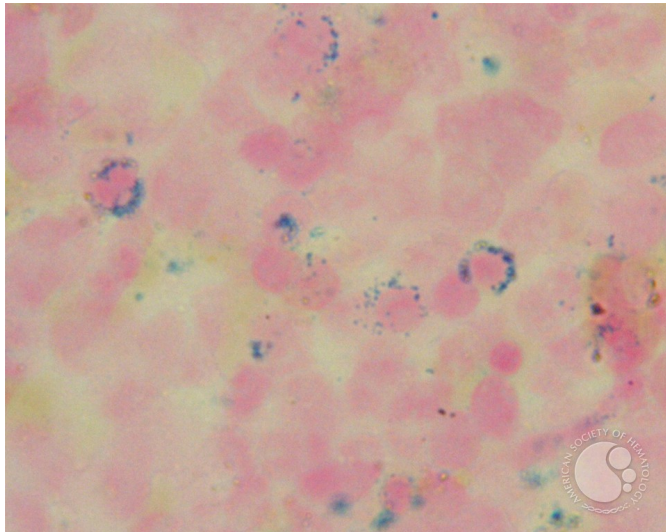
Refractory anemia with ringed sideroblast associated with thrombocytosis - 6.

Image ID: 4033

Authors: John Lazarchick

Category: Myeloid Neoplasms and acute leukemia (WHO 2016) > Myelodysplastic Syndromes (MDS) > MDS with Ring Sideroblasts (MDS-RS)

Description: The previous image is shown at higher magnification.



Copyright © 2026 American Society of Hematology. Copyright restrictions may apply.

