



ASH Image Bank™

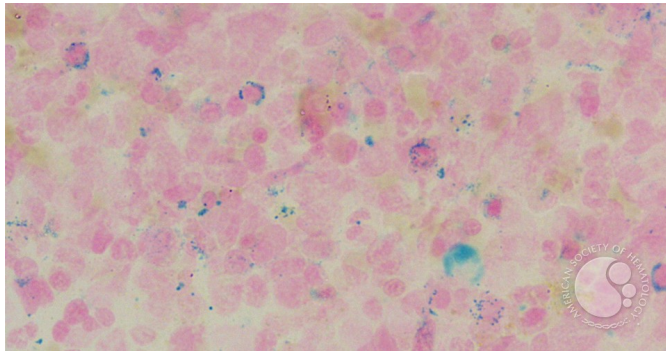
Refractory anemia with ringed sideroblast associated with thrombocytosis - 5.

Image ID: 4032

Authors: John Lazarchick

Category: Myeloid Neoplasms and acute leukemia (WHO 2016) > Myeloproliferative Neoplasms (MPN) > MPN, unclassifiable

Description: Multiple ringed sideroblasts are noted.



Copyright © 2026 American Society of Hematology. Copyright restrictions may apply.