



ASH Image Bank™

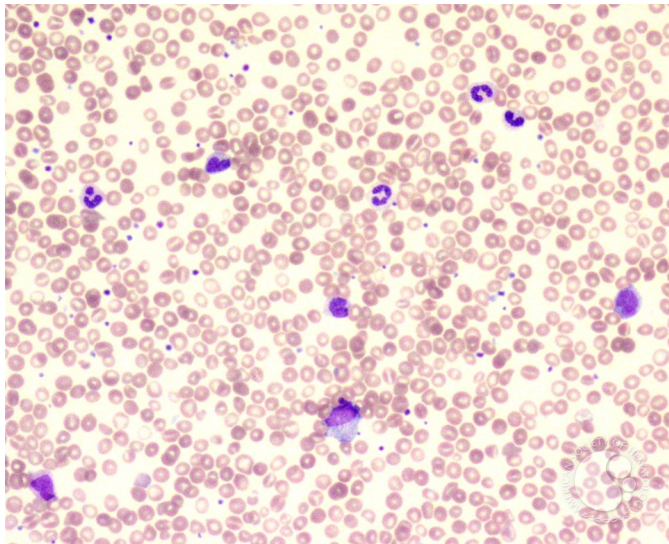
Refractory anemia with ringed sideroblast associated with thrombocytosis - 1.

Image ID: 4028

Authors: John Lazarchick

Category: Myeloid Neoplasms and acute leukemia (WHO 2016) > Myeloproliferative Neoplasms (MPN) > MPN, unclassifiable

Description: Peripheral smear from a patient with a diagnosis of refractory anemia with ringed sideroblasts and thrombocytosis. CBC showed a hemoglobin of 9g/dl, WBC 15,000/ul and platelet count of 460,000/ul. Note presence of few immature myeloid precursors and increased platelet with large forms present.



Copyright © 2026 American Society of Hematology. Copyright restrictions may apply.

