



ASH Image Bank™

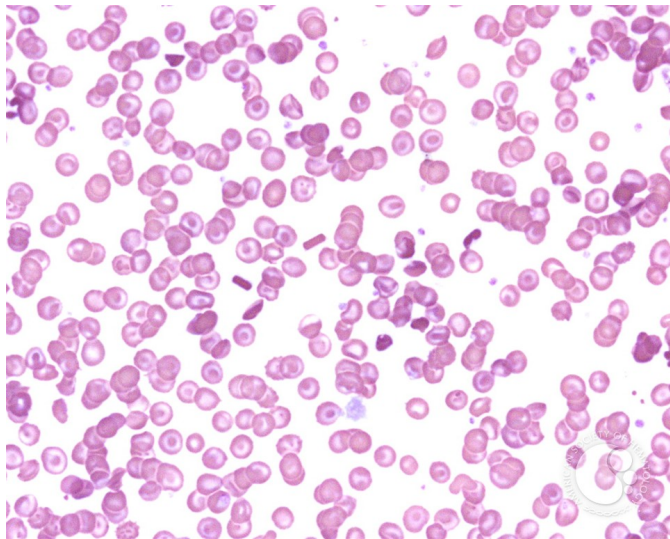
Hemoglobin C crystals - 1.

Image ID: 3786

Authors: John Lazarchick

Category: Red Cell: Hemoglobin disorder

Description: Peripheral smear from a patient with homozygous hemoglobin C is shown. Numerous rhomboid hemoglobin C crystals are noted in addition to the target cells.



Copyright © 2026 American Society of Hematology. Copyright restrictions may apply.

