



# ASH Image Bank™

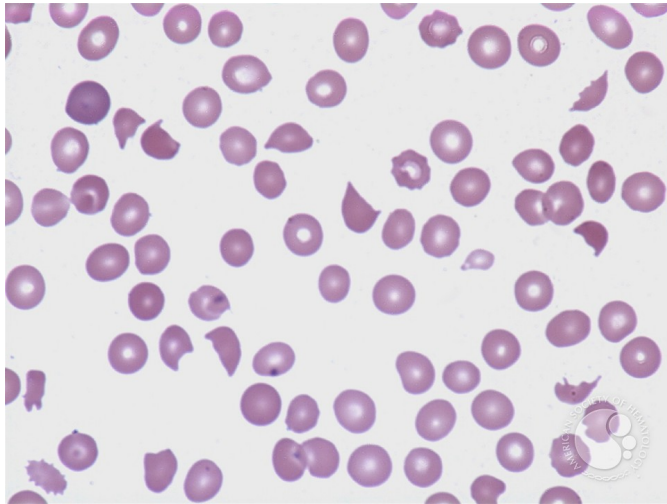
## Schistocytes - 1.

**Image ID:** 3718

**Authors:** Peter Maslak

**Category: Red Cell:** Hemolytic Anemia (HA)

**Description:** Peripheral smear from a patient with DIC shows characteristic "helmet" cells.



Copyright © 2026 American Society of Hematology. Copyright restrictions may apply.

