



# ASH Image Bank™

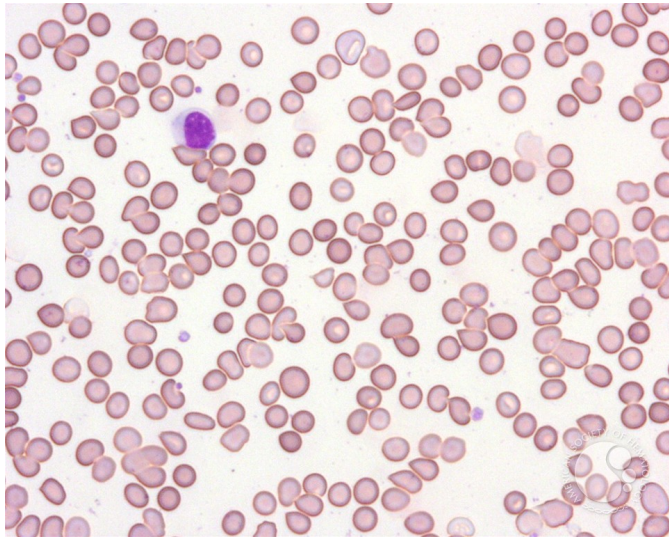
## RBC agglutination - 3.

Image ID: 3507

**Authors:** John Lazarchick; Ginell Post;

**Category: Red Cell:** Hemolytic Anemia (HA) > Autoimmune Hemolytic Anemias

**Description:** When the blood sample is warmed to 37°C for several minutes and a peripheral smear prepared on a pre-warmed slide, the agglutination is markedly decreased with single RBCs now predominant.



Copyright © 2026 American Society of Hematology. Copyright restrictions may apply.

