



ASH Image Bank™

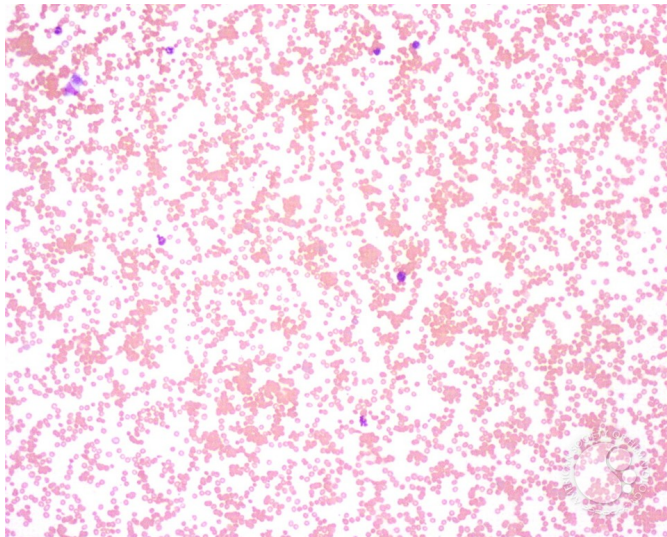
RBC agglutination - 1.

Image ID: 3505

Authors: John Lazarchick; Ginell Post;

Category: Red Cell: Hemolytic Anemia (HA) > Autoimmune Hemolytic Anemias > Cold-active antibodies > Cold agglutinin disease (CAD) > Secondary CAD > Infectious > Mycoplasma

Description: Low-power view of a peripheral smear from a 21-year-old male diagnosed with Mycoplasma pneumonia. Note the marked RBC agglutination. The cold agglutinin was an IgM antibody with anti-I specificity.



Copyright © 2026 American Society of Hematology. Copyright restrictions may apply.

