



# ASH Image Bank™

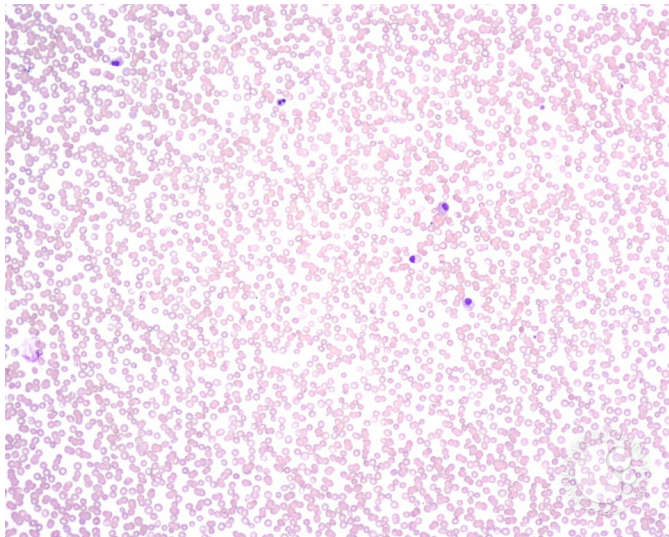
## Pelger-Huet Anomaly - 6.

**Image ID:** 2699

**Authors:** John Lazarchick

**Category:** Myeloid Disorders > Neutrophil function disorders > Pelger-Huet Anomaly

**Description:** A low power view of the peripheral smear illustrates the variant Pelger-Huet forms present, from the classical pince-nez shape to that of round or slightly indented nuclear forms. Similar findings were documented on this patient's peripheral smear 10 years previously.



Copyright © 2026 American Society of Hematology. Copyright restrictions may apply.

