



# ASH Image Bank™

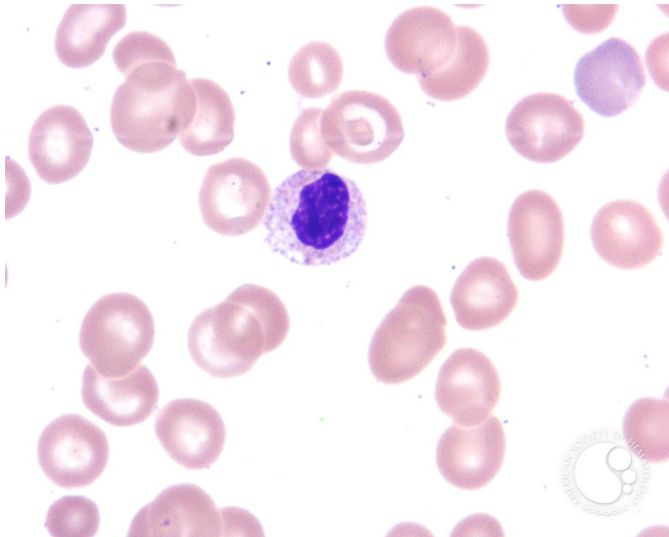
## Pelger-Huet Anomaly - 4.

**Image ID:** 2697

**Authors:** John Lazarchick

**Category:** Laboratory Hematology > Basic cell morphology > Morphologic variants of white blood cells > Hyposegmented neutrophil > True Pelger Huet

**Description:** A higher power view of the previous image better illustrates the mature nucleus of the Pelger-Huet cell. The chromatin is clumped and the nucleus slightly indented. There is a suggestion of a Dohle body abutting the cytoplasmic membrane.



Copyright © 2026 American Society of Hematology. Copyright restrictions may apply.

