



# ASH Image Bank™

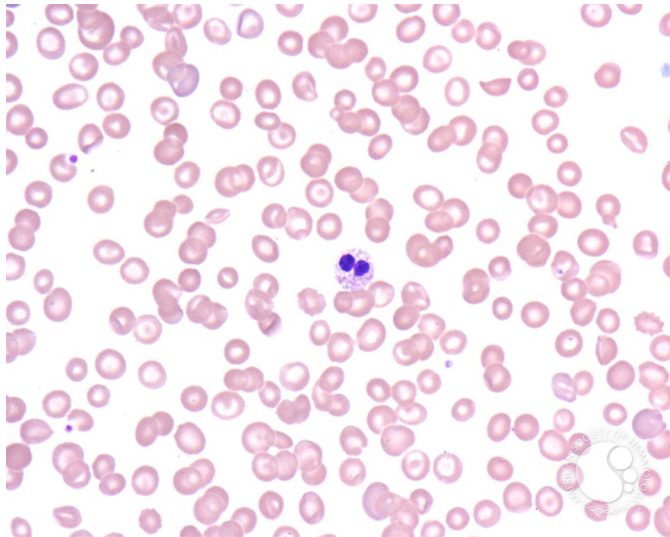
## Pelger-Huet Anomaly - 1.

**Image ID:** 2694

**Authors:** John Lazarchick

**Category:** Myeloid Disorders > Neutrophil function disorders > Pelger-Huet Anomaly

**Description:** Peripheral smear from a 45 year old male with alcoholic cirrhosis. His WBC was 3110 with 80% of his neutrophils showing hyposegmentation. A bi-lobed (pince-nez) form is shown in this view.



Copyright © 2026 American Society of Hematology. Copyright restrictions may apply.

