



ASH Image Bank™

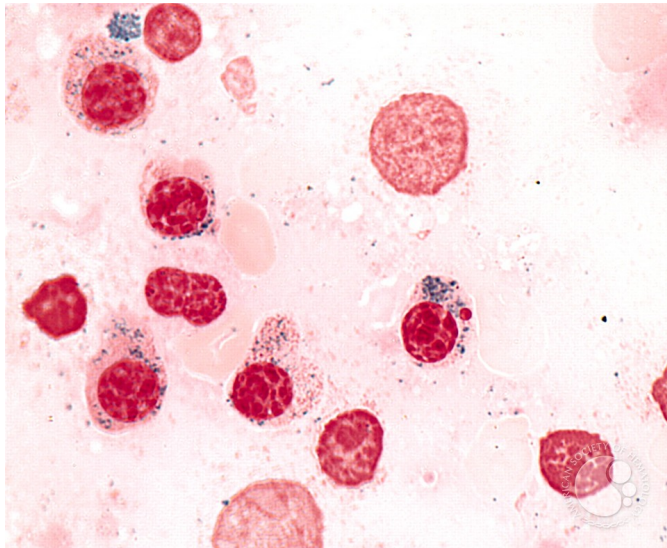
Refractory Anemia with Ring Sideroblasts - 7.

Image ID: 2631

Authors: Peter Maslak

Category: Myeloid Neoplasms and acute leukemia (WHO 2016) > Myelodysplastic Syndromes (MDS) > MDS with Ring Sideroblasts (MDS-RS)

Description: RARS accounts for approximately 15%-20% of the myelodysplastic syndromes.



Copyright © 2026 American Society of Hematology. Copyright restrictions may apply.

