



# ASH Image Bank™

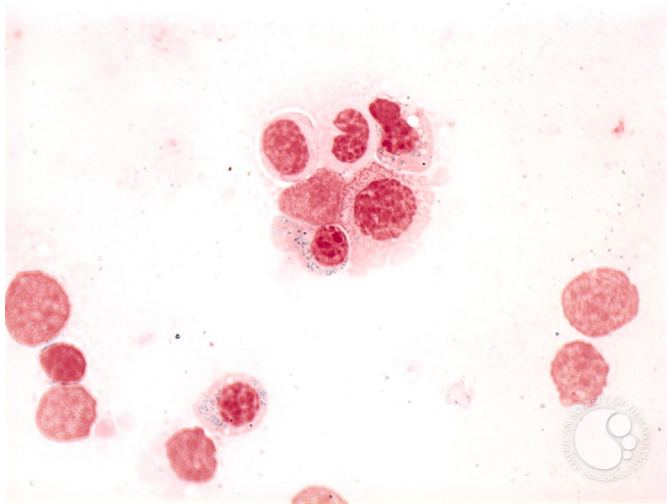
## Refractory Anemia with Ring Sideroblasts - 5.

**Image ID:** 2629

**Authors:** Peter Maslak

**Category:** Myeloid Neoplasms and acute leukemia (WHO 2016) > Myelodysplastic Syndromes (MDS) > MDS with Ring Sideroblasts (MDS-RS)

**Description:** Ring sideroblasts are formed by abnormal deposition of iron in the mitochondria surrounding the nucleus of red cell precursors.



Copyright © 2026 American Society of Hematology. Copyright restrictions may apply.

