



ASH Image Bank™

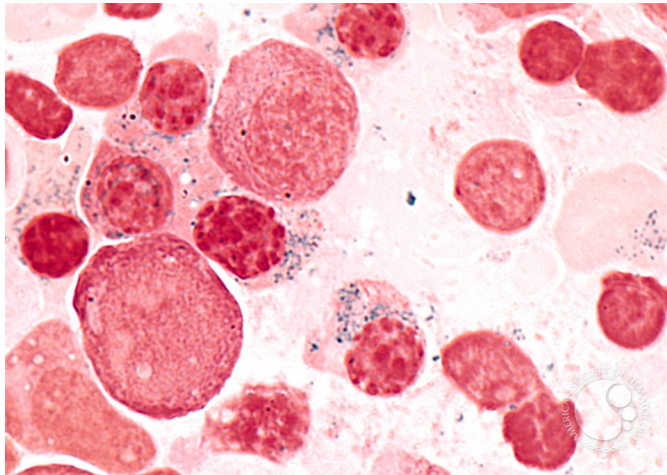
Refractory Anemia with Ring Sideroblasts - 4.

Image ID: 2628

Authors: Peter Maslak

Category: Myeloid Neoplasms and acute leukemia (WHO 2016) > Myelodysplastic Syndromes (MDS) > MDS with Ring Sideroblasts (MDS-RS)

Description: Iron may be distributed in the mitochondria in a typical "necklace" pattern around the nucleus or as large clusters within the cytoplasm.



Copyright © 2026 American Society of Hematology. Copyright restrictions may apply.

