



ASH Image Bank™

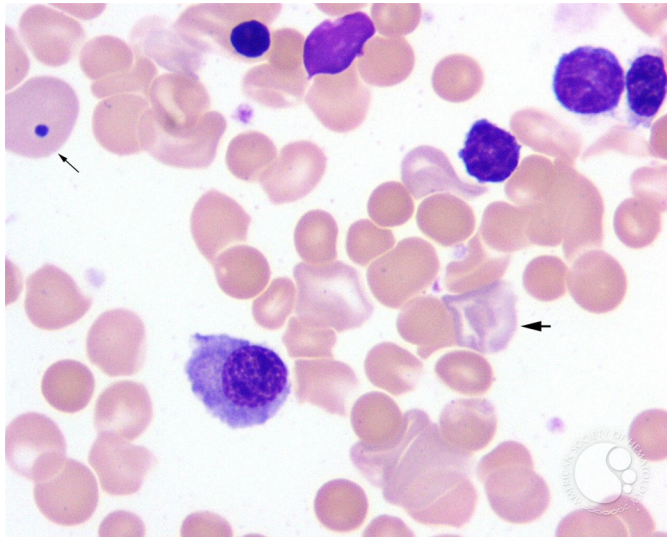
Erythroblastosis Fetalis - 3.

Image ID: 1785

Authors: John Lazarchick

Category: Red Cell: Hemolytic Anemia (HA) > Autoimmune Hemolytic Anemias

Description: A single Howell-Jolly body inclusion is present (thin arrow) reflecting a marked increase in red cell turnover by the marrow. Polychromasia is also present (thick arrow).



Copyright © 2026 American Society of Hematology. Copyright restrictions may apply.

