



ASH Image Bank™

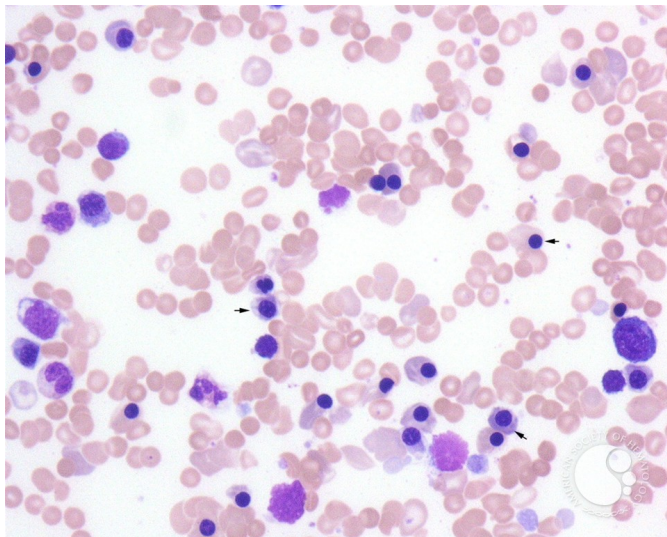
Erythroblastosis Fetalis - 1.

Image ID: 1783

Authors: John Lazarchick

Category: Red Cell: Hemolytic Anemia (HA) > Autoimmune Hemolytic Anemias

Description: Peripheral smear in a newborn with ABO incompatibility. Numerous nucleated RBCs (arrows) are noted in addition to the polychromasia and spherocytes.



Copyright © 2026 American Society of Hematology. Copyright restrictions may apply.

