



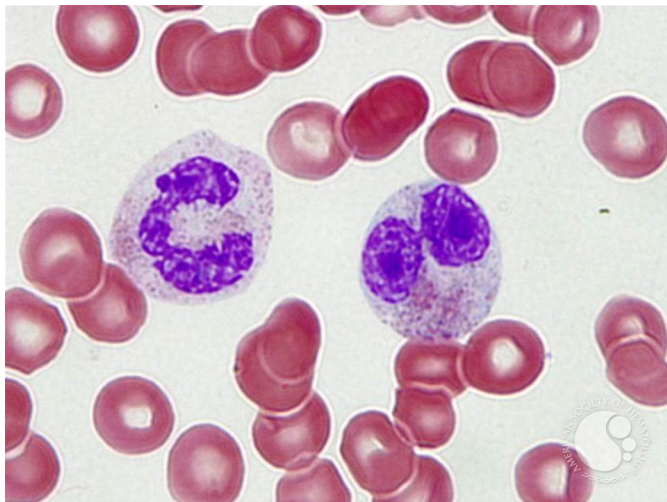
## Pseudo Pelger-Huët Anomaly

**Image ID:** 17390

**Authors:** Carole Bitar and Nakhle Saba

**Category:** Laboratory Hematology > Basic cell morphology > Morphologic variants of white blood cells > Hyposegmented neutrophil

**Description:** Wright stain showing a Pseudo-Pelger-Huet neutrophil and a band on the peripheral blood of a patient with a Chronic Myeloproliferative Disorder, Unclassified. Pelger-Huet anomaly is an autosomal dominant benign disorder, while Pseudo-Pelger-Huet anomaly (PHA) is an acquired disease. The presence of PHA cells on a blood film may reflect an underlying myeloproliferative disease (classically CML) or myelofibrosis, and should trigger prompt investigations.



Copyright © 2026 American Society of Hematology. Copyright restrictions may apply.