



ASH Image Bank™

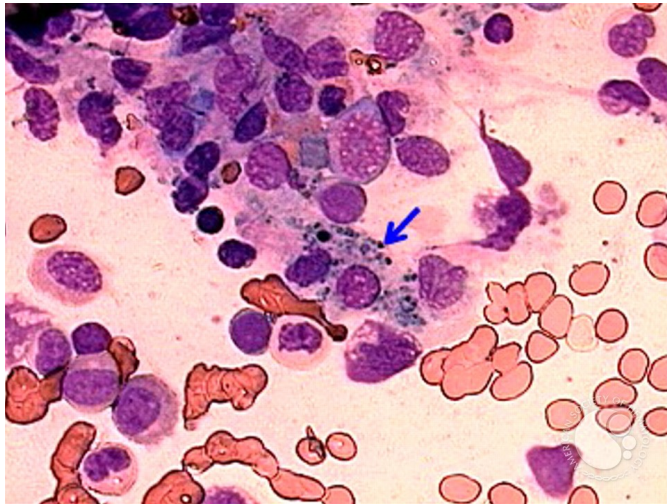
Debris-laden macrophage - 1.

Image ID: 1651

Authors: Peter Maslak

Category: Laboratory Hematology > Basic cell morphology > Morphologic variants of white blood cells

Description: Macrophage laden with cytoplasmic debris (arrow) has a rather amorphous structure (MacNeal Tetrachrome 400x)



Copyright © 2026 American Society of Hematology. Copyright restrictions may apply.

