



# ASH Image Bank™

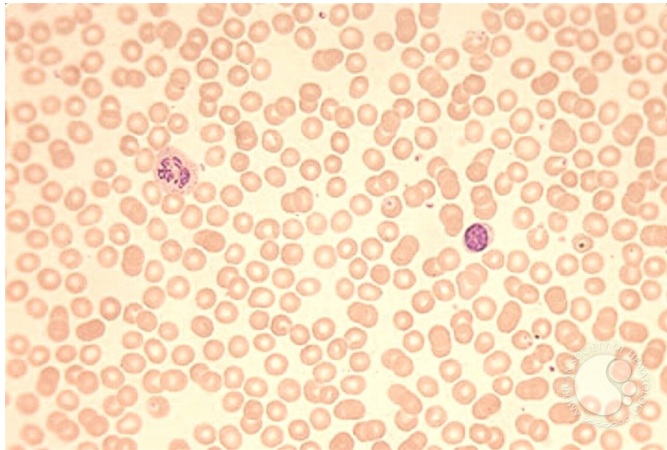
## Pure Red Cell Aplasia (PRCA) &ndash; parvovirus infection - 1.

**Image ID:** 1548

**Authors:** Stanley Schrier

**Category:** Underproduction Anemias > Pure Red Cell Aplasia

**Description:** The peripheral smear is virtually normal. The only subtle finding is an absence of RBC polychromasia.



Copyright © 2026 American Society of Hematology. Copyright restrictions may apply.

