



ASH Image Bank™

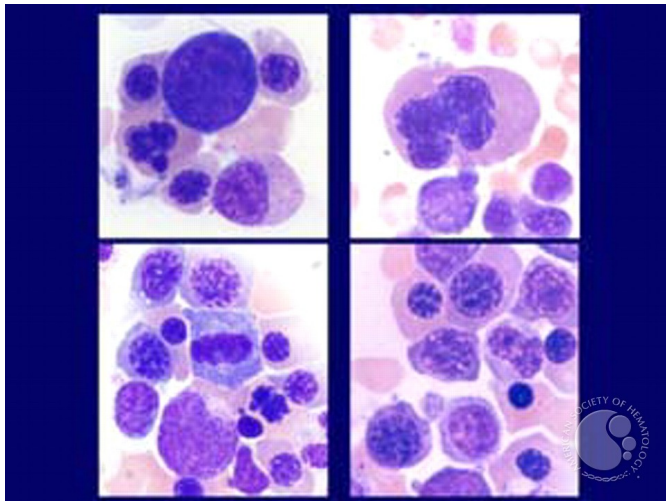
Myelodysplastic Syndrome: Refractory Anemia with Ringed Sideroblasts (RARS) - 6.

Image ID: 1441

Authors: James W Vardiman

Category: Myeloid Neoplasms and acute leukemia (WHO 2016) > Myelodysplastic Syndromes (MDS) > MDS with Ring Sideroblasts (MDS-RS)

Description: Refractory anemia with ringed sideroblasts (RARS). Bone marrow aspirate smear (Wright-Giemsa stain). This composite shows erythroid precursors from RARS. They vary from mildly dyspoietic cells to large, bizarre, multinucleated cells.



Copyright © 2026 American Society of Hematology. Copyright restrictions may apply.

