



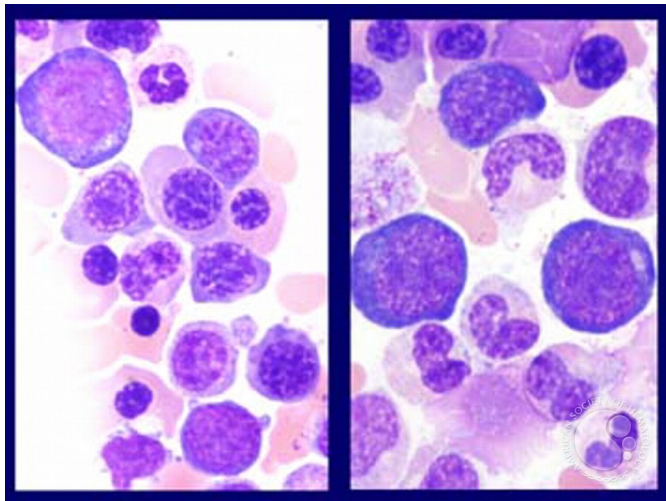
Myelodysplastic Syndrome: Refractory Anemia with Ringed Sideroblasts (RARS) - 5.

Image ID: 1440

Authors: James W Vardiman

Category: Myeloid Neoplasms and acute leukemia (WHO 2016) > Myelodysplastic Syndromes (MDS) > MDS with Ring Sideroblasts (MDS-RS)

Description: Refractory anemia with ringed sideroblasts (RARS). Bone marrow aspirate smear (Wright-Giemsa stain). In this slide, there are mild megaloblastoid changes of the erythroid precursors. The morphologic features of the erythroid cells are variable in RARS (see next slide), but the granulocytes have no dysplastic features in this case.



Copyright © 2026 American Society of Hematology. Copyright restrictions may apply.