



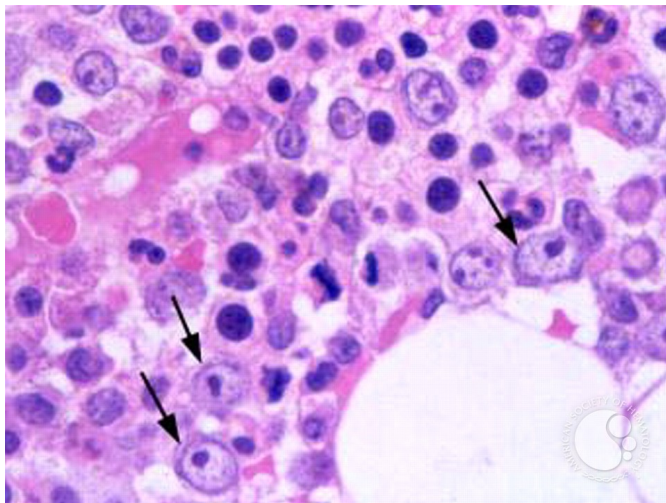
Myelodysplastic Syndrome: Refractory Anemia with Ringed Sideroblasts (RARS) - 3.

Image ID: 1438

Authors: James W Vardiman

Category: Myeloid Neoplasms and acute leukemia (WHO 2016) > Myelodysplastic Syndromes (MDS) > MDS with Ring Sideroblasts (MDS-RS)

Description: Refractory anemia with ringed sideroblasts (RARS). Bone marrow biopsy specimen (H & E stain). This high power view of the biopsy illustrates the erythroid hyperplasia. The immature cells at the arrows are immature erythroid precursors, which are characterized by a round to oval nucleus with vesicular chromatin pattern, and prominent, often comma-shaped nucleoli, and a modest rim of blue-grey (amphophilic) cytoplasm.



Copyright © 2026 American Society of Hematology. Copyright restrictions may apply.