



ASH Image Bank™

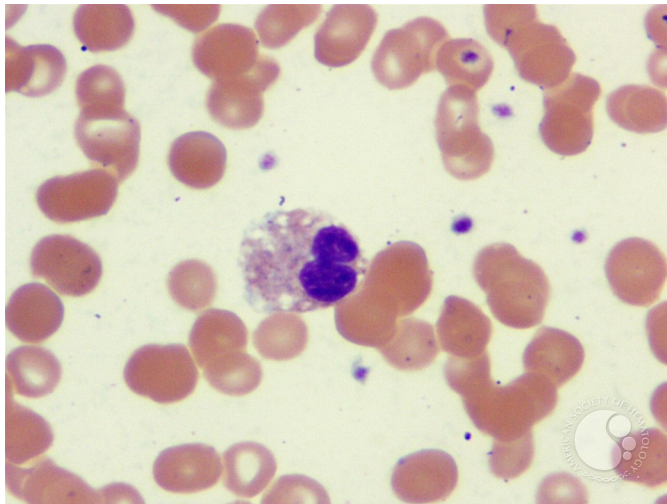
Pelger-Huet anomaly variants - 1.

Image ID: 1261

Authors: John Lazarchick

Category: Myeloid Disorders > Neutrophil function disorders > Pelger-Huet Anomaly

Description: Routine peripheral smear performed on a 64-year-old female who was being evaluated for adult onset diabetes mellitus. Of note was the presence of hypolobated PMNs consistent with the Pelger-Huet anomaly. A classic pince-nez cell is shown.



Copyright © 2026 American Society of Hematology. Copyright restrictions may apply.

