



ASH Image Bank™

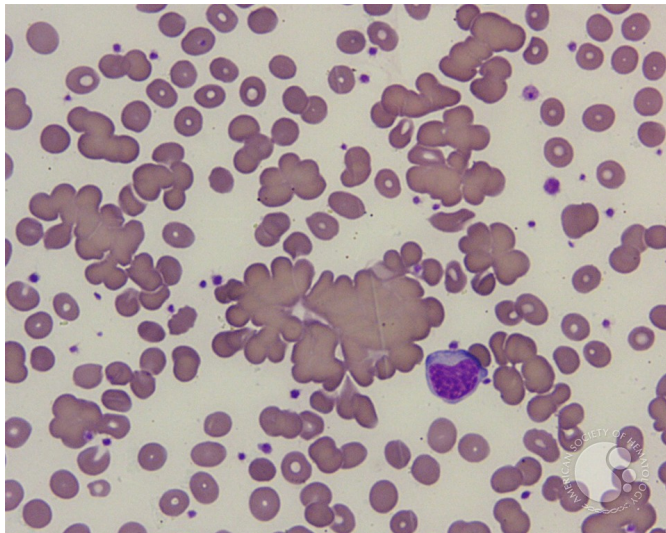
Cold agglutinin disease - 2.

Image ID: 1053

Authors: John Lazarchick

Category: Red Cell: Hemolytic Anemia (HA) > Autoimmune Hemolytic Anemias > Cold-active antibodies > Cold agglutinin disease (CAD) > Secondary CAD > Lymphoproliferative diseases

Description: Agglutinated masses of RBCs of variable size are noted in this view. Both the WBC and platelet count were normal.



Copyright © 2026 American Society of Hematology. Copyright restrictions may apply.

