



ASH Image Bank™

Gout - synovial fluid

Authors: Peter Maslak

Category: Laboratory Hematology > Special hematology tests

Description: Wrist aspirate

Number of Units: 2

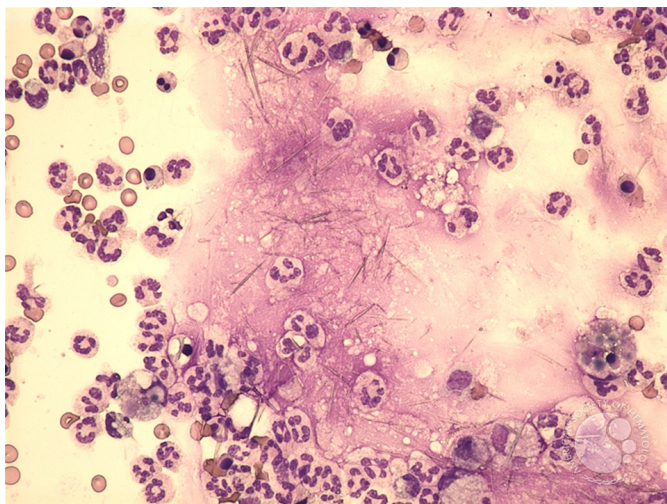
Gout - synovial fluid

Image ID: 13493

Authors: Peter Maslak, Lisa Southern

Category: Laboratory Hematology > Special hematology tests

Description: Granulocytes are increased in the fluid aspirated from the patient's wrist. Crystals are also noted



Copyright © 2026 American Society of Hematology. Copyright restrictions may apply.





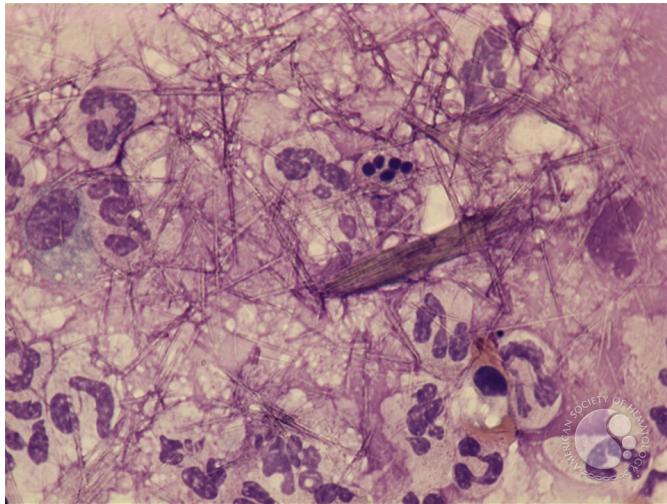
Gout - synovial fluid

Image ID: 13494

Authors: Peter Maslak, Lisa Southern

Category: Laboratory Hematology > Body fluids: abnormal cells and microorganisms with cross-references to specific diagnoses when appropriate > Miscellaneous findings in body fluids

Description: High power view of the fluid reveals uric acid crystals. These are typically Needle-shaped.



Copyright © 2026 American Society of Hematology. Copyright restrictions may apply.